



AVANTI



MARLIA



NOVARA

Fabrics for Body and Scatters



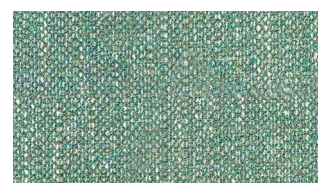
N105
58.7% Textured Ply 41.3% Ac
PR N/A W 140cm



N106
58.7% Textured Ply 41.3% Ac
PR N/A W 140cm



N107
58.7% Textured Ply 41.3% Ac
PR N/A W 140cm



N117
100% Ply
PR N/A W 138cm



N118
100% Ply
PR N/A W 138cm



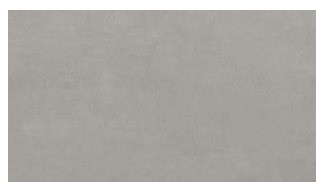
N119
100% Ply
PR N/A W 138cm



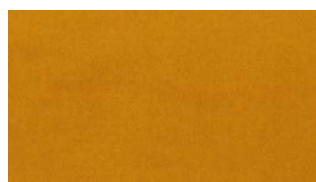
N125
100% Ply
PR N/A W 138cm



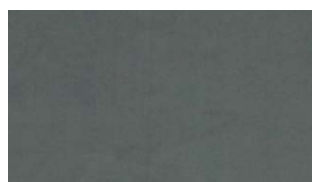
N128
100% Ply
PR N/A W 138cm



N129
100% Ply
PR N/A W 138cm



N131
100% Ply
PR N/A W 138cm



N132
100% Ply
PR N/A W 138cm



N133
100% Ply
PR N/A W 138cm



N134
100% Ply Face 100% Co Backing
PR N/A W 138cm



N135
100% Ply
PR N/A W 142cm



N136
100% Ply
PR N/A W 138cm



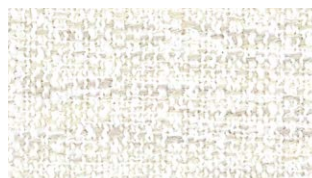
N137
100% Ply
PR N/A W 142cm



N147
100% R Ply
PR N/A W 140cm



N148
100% R Ply
PR N/A W 142cm



N150
100% Ply
PR N/A W 140cm



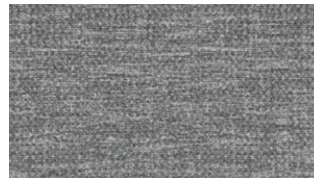
N154
100% Ply
PR N/A W 138cm



N155
100% Ply
PR N/A W 138cm



N156
100% Ply
PR N/A W 138cm

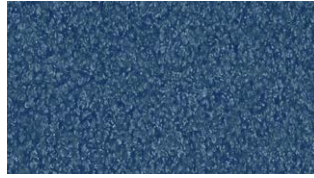


N157
100% Ply
PR N/A W 138cm

Accent Fabrics Only Available on Scatters, Armchairs, Snugglers & Footstools.



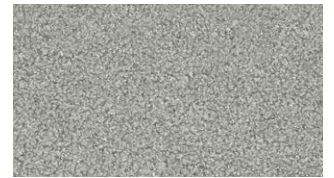
N138
100% Ply
PR N/A W 138cm



N139
100% Ply
PR N/A W 138cm



N140
100% Ply
PR N/A W 138cm



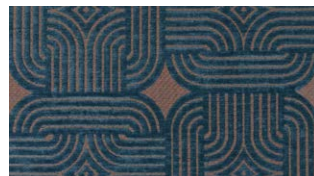
N141
100% Ply
PR N/A W 138cm



N142
100% Ply
PR 36.5cm W 138cm



N143
100% Ply
PR 36.5cm W 138cm



N144
100% Ply
PR 36.5cm W 138cm



N312
100% Wo
PR N/A W 140cm



Abbreviations:

Ac - Acrylic
Co - Cotton
Fl - Flax
Li - Linen
Mod - Modacrylic
N/A - Not applicable
Ny - Nylon

OR - Other Recycled Fibres
Pa - Polyamide
PR - Pattern repeat
Pc - Polycotton
Ply - Polyester
PP - Polypropylen
R - Recycled

Ra - Rayon
Se - Silk
U - Undyed
Vi - Viscose
W - Width
Wo - Wool



Fabrics with the above logo are made using recycled, natural or more eco-friendly materials.

Every effort has been made to show these fabrics accurately, but colours may vary, call 01844 271800 or visit ercol.com to order a fabric sample.