



HUGHENDEN

Fabrics for Body and Scatters



H101 Eton Coral
100% Ply
PR N/A W 140cm



H102 Eton Asphalt
100% Ply
PR N/A W 140cm



H103 Eton Atlantic
100% Ply
PR N/A W 140cm



H104 Eton Slate
100% Ply
PR N/A W 140cm



H105 Eton Ochre
100% Ply
PR N/A W 140cm



H106 Eton Ocean
100% Ply
PR N/A W 140cm



H107 Wycombe Blush
29% Co 29% Vi 20% Ac 15% Li
7% Ply
PR N/A W 140cm



H108 Wycombe Steel
29% Co 29% Vi 20% Ac 15% Li
7% Ply
PR N/A W 140cm



H109 Wycombe Royal
29% Co 29% Vi 20% Ac 15% Li
7% Ply
PR N/A W 140cm



H110 Wycombe Mustard
29% Co 29% Vi 20% Ac 15% Li
7% Ply
PR N/A W 140cm



H111 Wycombe Dove
29% Co 29% Vi 20% Ac 15% Li
7% Ply
PR N/A W 140cm

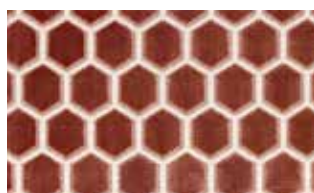


H112 Wycombe Teal
29% Co 29% Vi 20% Ac 15% Li
7% Ply
PR N/A W 140cm

Scatter fabrics



H501 Honeycomb Charcoal
75% Vi 25% Ply
PR N/A W 140cm



H502 Honeycomb Rose
75% Vi 25% Ply
PR N/A W 140cm



H503 Honeycomb Navy
75% Vi 25% Ply
PR N/A W 140cm

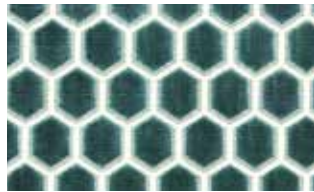


H504 Honeycomb Honey
75% Vi 25% Ply
PR N/A W 140cm



H505 Honeycomb Silver

75% Vi 25% Ply
PR N/A W 140cm



H506 Honeycomb Teal

75% Vi 25% Ply
PR N/A W 140cm

Abbreviations:

Co-Cotton
Li-Linen
Pa-Polyamide
PC-Polycotton
Ply-Polyester
PR-Pattern repeat
Vi-Viscose
W-Width