

ercol JOHN LEWIS COLLECTION 2023



**BELLINGDON
DINING CHAIR**
only J810



ETERNA
only J806



HAZLEMERE

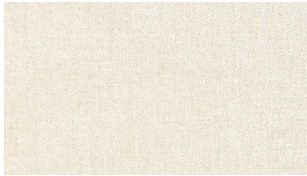


HEXTON

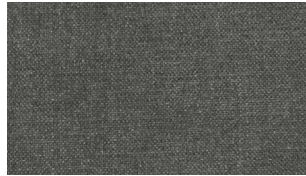


SORRENTO

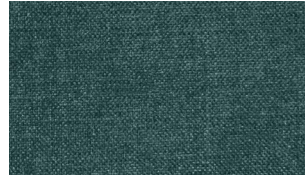
AVAILABLE ON HEXTON AND SORRENTO



J800
Soft Chenille Natural
100% Ply W 138cm



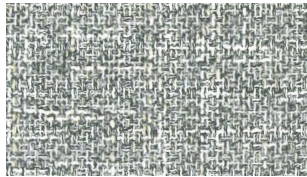
J801
Soft Chenille Grey
100% Ply W 138cm



J802
Soft Chenille Teal
100% Ply W 138cm



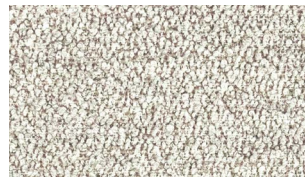
J803
Soft Chenille Navy
100% Ply W 138cm



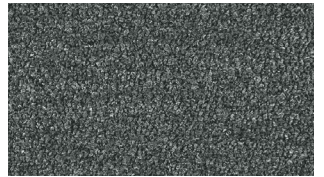
J804
Textured Weave Natural
100% Ply W 138cm



J805
Textured Weave Blue
100% Ply W 138cm



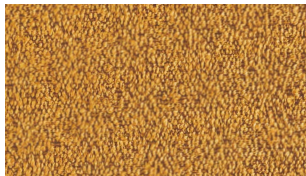
J806
Boucle Natural
96% Ply 4% Ac W 143cm



J807
Boucle Grey
96% Ply 4% Ac W 143cm



J808
Boucle Green
96% Ply 4% Ac W 143cm

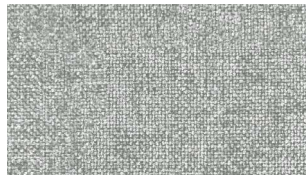


J809
Boucle Spice
96% Ply 4% Ac W 143cm

AVAILABLE ON HAZLEMERE



J810
Recycled Fabric Ecrú
100% R Ply W 138cm



J811
Recycled Fabric Pumice
100% R Ply W 138cm



J812
Recycled Fabric Moss
100% R Ply W 138cm



J813
Recycled Fabric Atlantic
100% R Ply W 138cm



Abbreviations:

- Ac - Acrylic
- Co - Cotton
- Fl - Flax
- Li - Linen
- Mod - Modacrylic
- N/A - Not applicable
- Ny - Nylon

- OR - Other Recycled Fibres
- Pa - Polymide
- PR - Pattern repeat
- Pc - Polycotton
- Ply - Polyester
- PP - Polypropylen
- R - Recycled

- Ra - Rayon
- Se - Silk
- U - Undyed
- Vi - Viscose
- W - Width
- Wo - Wool



Fabrics with the above logo are made using recycled, natural or more eco-friendly materials.

Cleaning instructions: All our fabrics should be cleaned in situ by a specialist dry cleaner.



FABRIC INFORMATION

Colour matching: Irregularities such as slubs are inherent characteristics of fabrics which contain fine natural yarns. Every effort is made to keep the colour constant between dye batches, but the fabric manufacturer cannot guarantee exact matching. Pile fabrics may flatten during use resulting in a shaded appearance. Please ask for a stock cutting if an exact shade is required. All fabrics are subject to availability and all fabrics will fade in the sun.

All our fabrics are Flame retardant and have been tested by the supplier and comply with the requirement of **The Furniture & Furnishings (Fire) (Safety) Regulations 1988 to BS 5852 Part 1 Source 0 & 1. Cigarette and match.** All our fabrics have been tested by the supplier and pass, at least, the General Domestic **Martindale abrasion test ISO 12947-2**

Ercol reserves the right to alter specifications of its fabric collections without prior notice
Every effort has been made to show the fabrics in these pages as accurately as possible.

To request swatches, call 01844 271800
or visit ercol.com

ercol