



SANDFORD

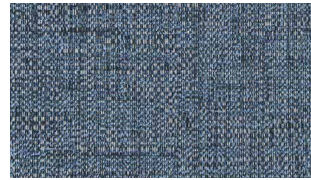
Fabrics for Body and Scatters



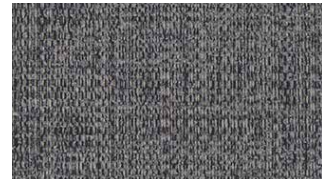
H120
67% Ply 30% R Co 5% O
PR N/A W 140cm



H121
67% Ply 30% R Co 5% O
PR N/A W 140cm



H122
67% Ply 30% R Co 5% O
PR N/A W 140cm



H124
67% Ply 30% R Co 5% O
PR N/A W 140cm



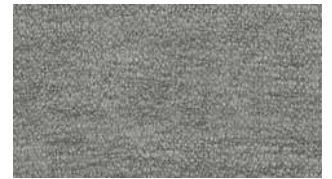
H130
100% Ply
PR N/A W 138cm



H131
100% Ply
PR N/A W 138cm



H132
100% Ply
PR N/A W 138cm



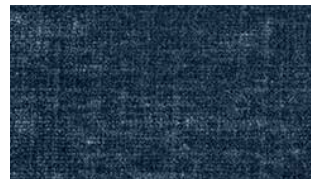
H134
100% Ply
PR N/A W 138cm



H135
100% Ply
PR N/A W 138cm



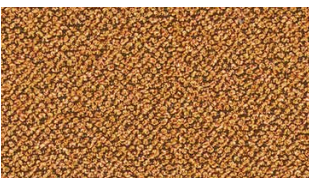
H136
100% Ply
PR N/A W 138cm



H137
100% Ply
PR N/A W 138cm



H139
100% Ply
PR N/A W 138cm



H140
100% Ply
PR N/A W 142cm



H141
100% Ply
PR N/A W 142cm



H142
100% Ply
PR N/A W 142cm

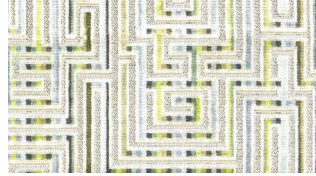


H143
100% Ply
PR N/A W 142cm

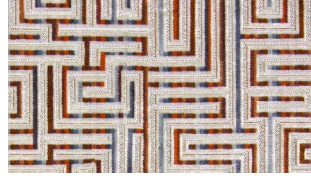
Accent Fabrics Only Available on Scatters, Armchairs, Snugglers & Footstools.



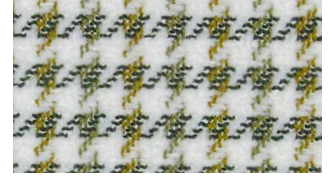
H510
Pile: 100% Vi
Base: 52% Vi 43% Ply 5% Co
PR 35 x 34cm W 140cm



H511
Pile: 100% Vi
Base: 52% Vi 43% Ply 5% Co
PR 35 x 34cm W 140cm



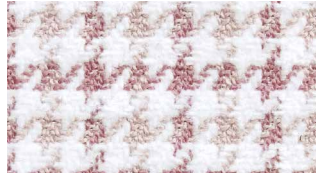
H512
Pile: 100% Vi
Base: 52% Vi 43% Ply 5% Co
PR 35 x 34cm W 140cm



H516
100% Ply
PR 2cm W 142cm



H517
100% Ply
PR 2cm W 142cm



H518
100% Ply
PR 2cm W 142cm

Abbreviations:

Ac - Acrylic
Co - Cotton
Fl - Flax
Li - Linen
Mod - Modacrylic
N/A - Not applicable
Ny - Nylon

OR - Other Fibres
OR - Other Recycled Fibres
Pa - Polyamide
PR - Pattern repeat
Pc - Polycotton
Ply - Polyester
PP - Polypropylen

R - Recycled
Ra - Rayon
Se - Silk
U - Undyed
Vi - Viscose
W - Width
Wo - Wool
Wp - Alpaca



Fabrics with the above logo are made using recycled, natural or more eco-friendly materials.

Every effort has been made to show these fabrics accurately, but colours may vary, call 01844 271800 or visit ercol.com to order a fabric sample.